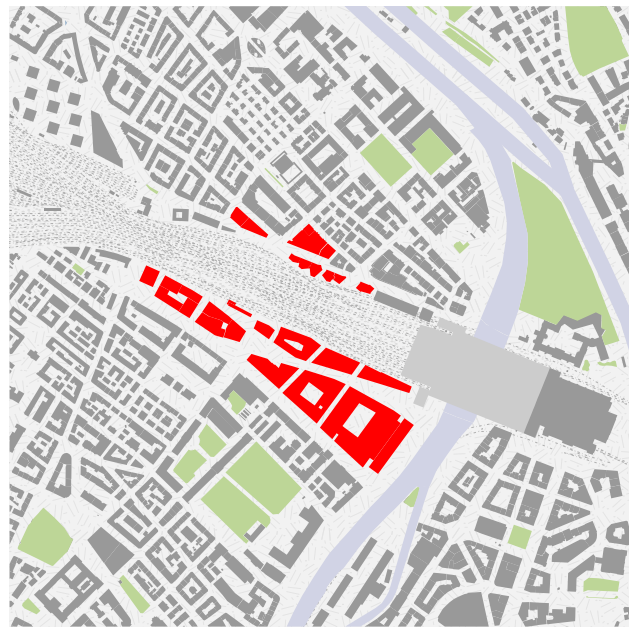
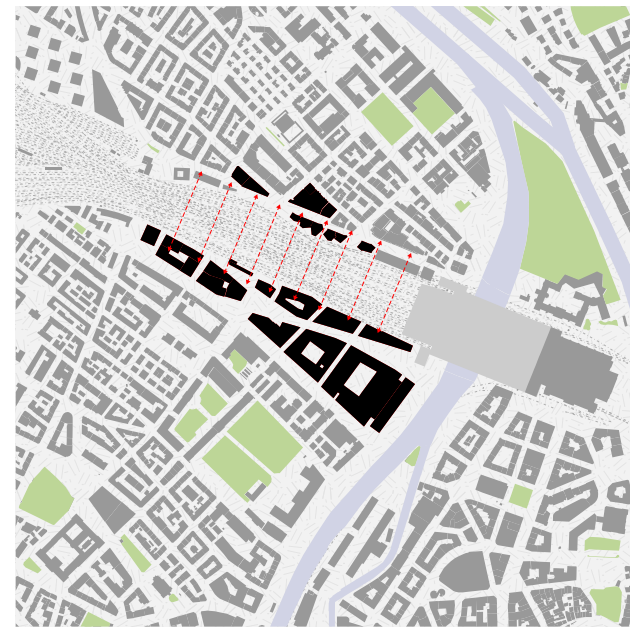


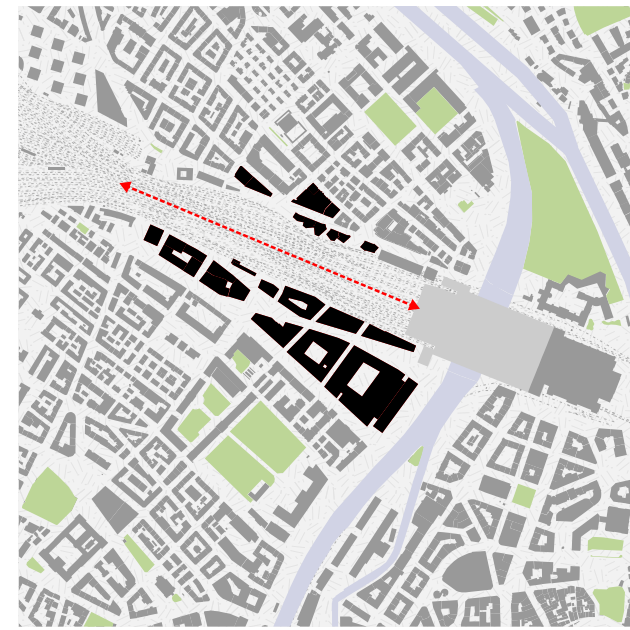
De la voie à la ville : un principe de verticalité



Europaallee



Vis-à-vis initial



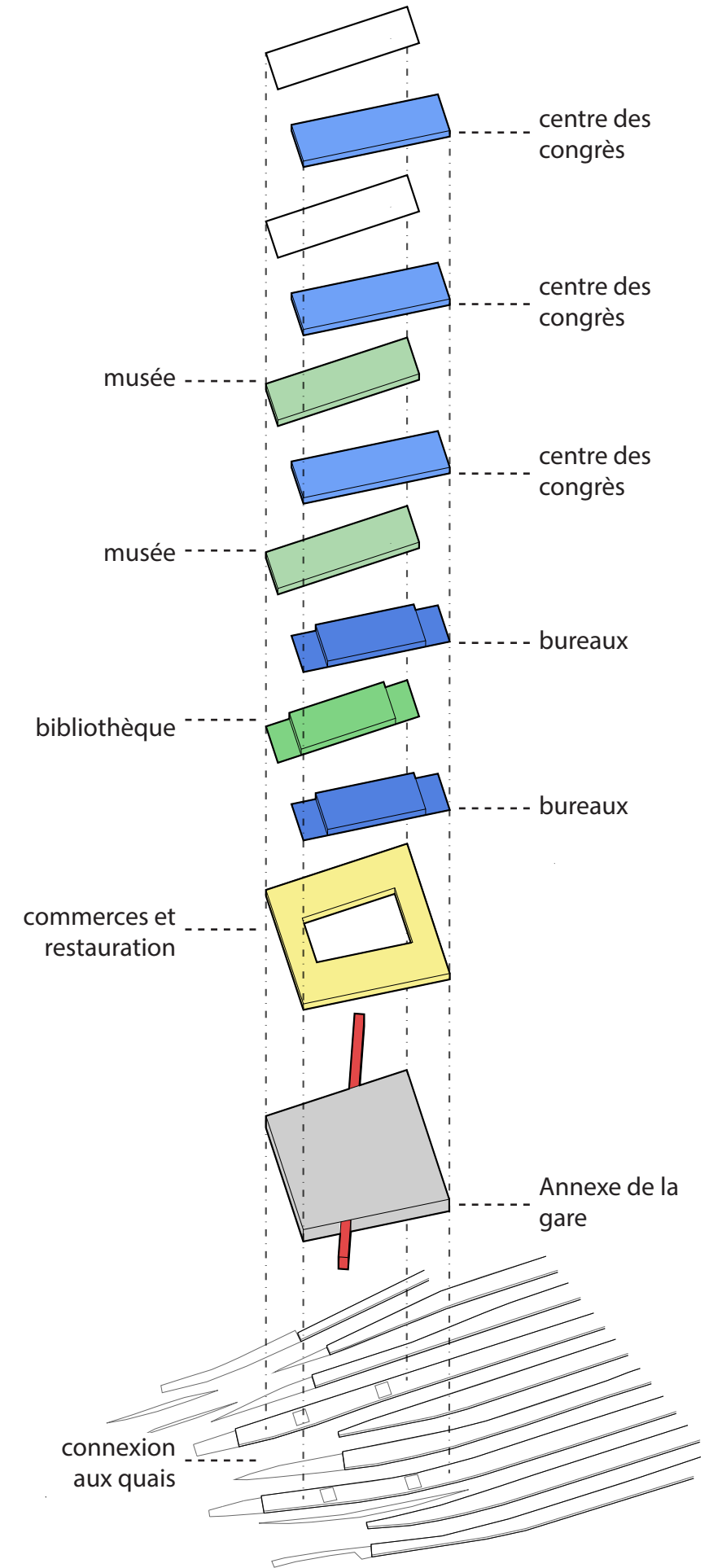
Dimension à découvrir



Position privilégiée



Nouvelle centralité





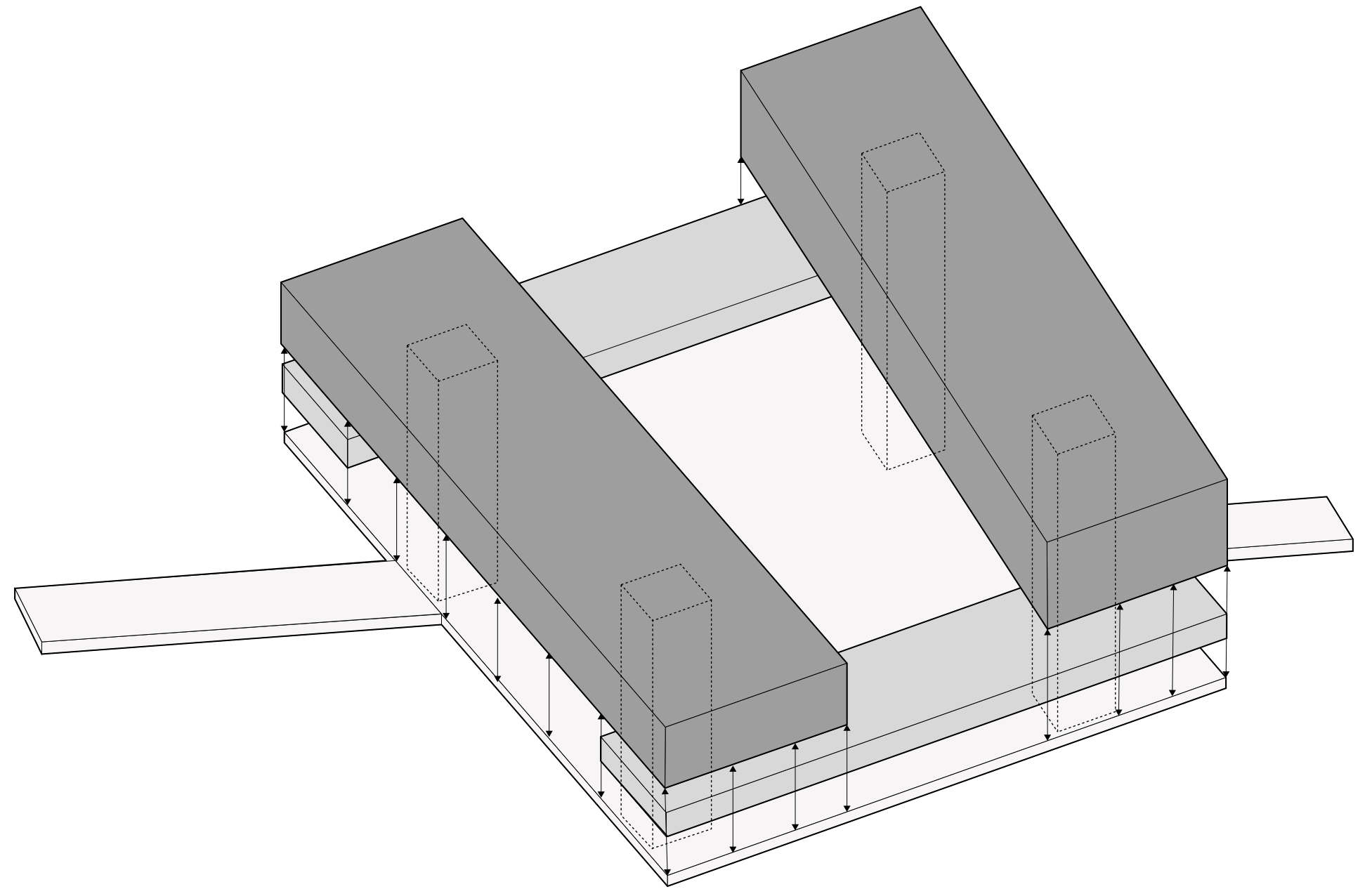
MASP - Lina Bo Bardi (1968)



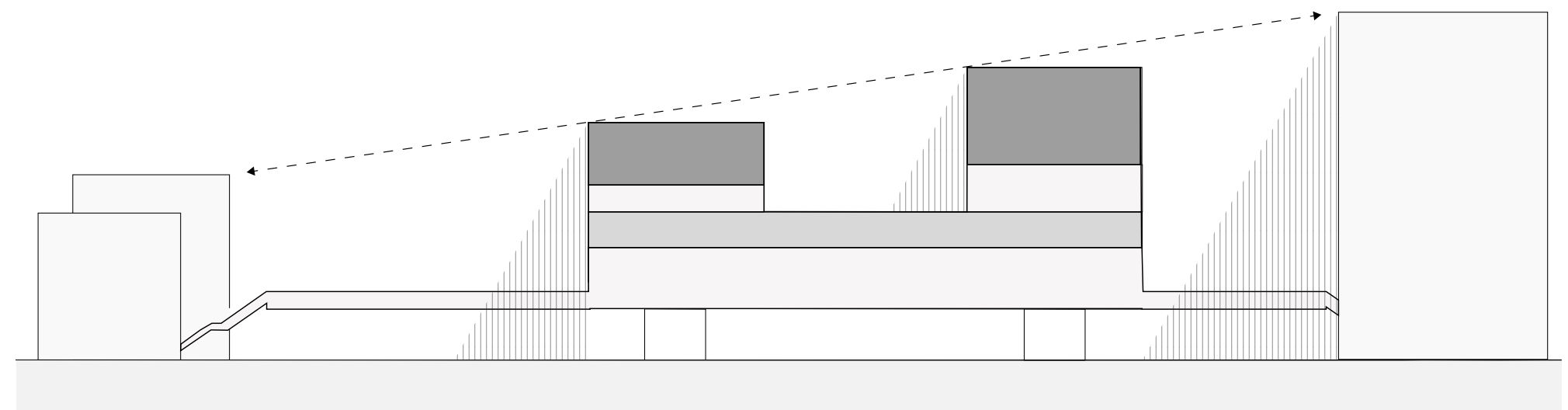
Art Center College of Design - Craig Ellwood (1975)



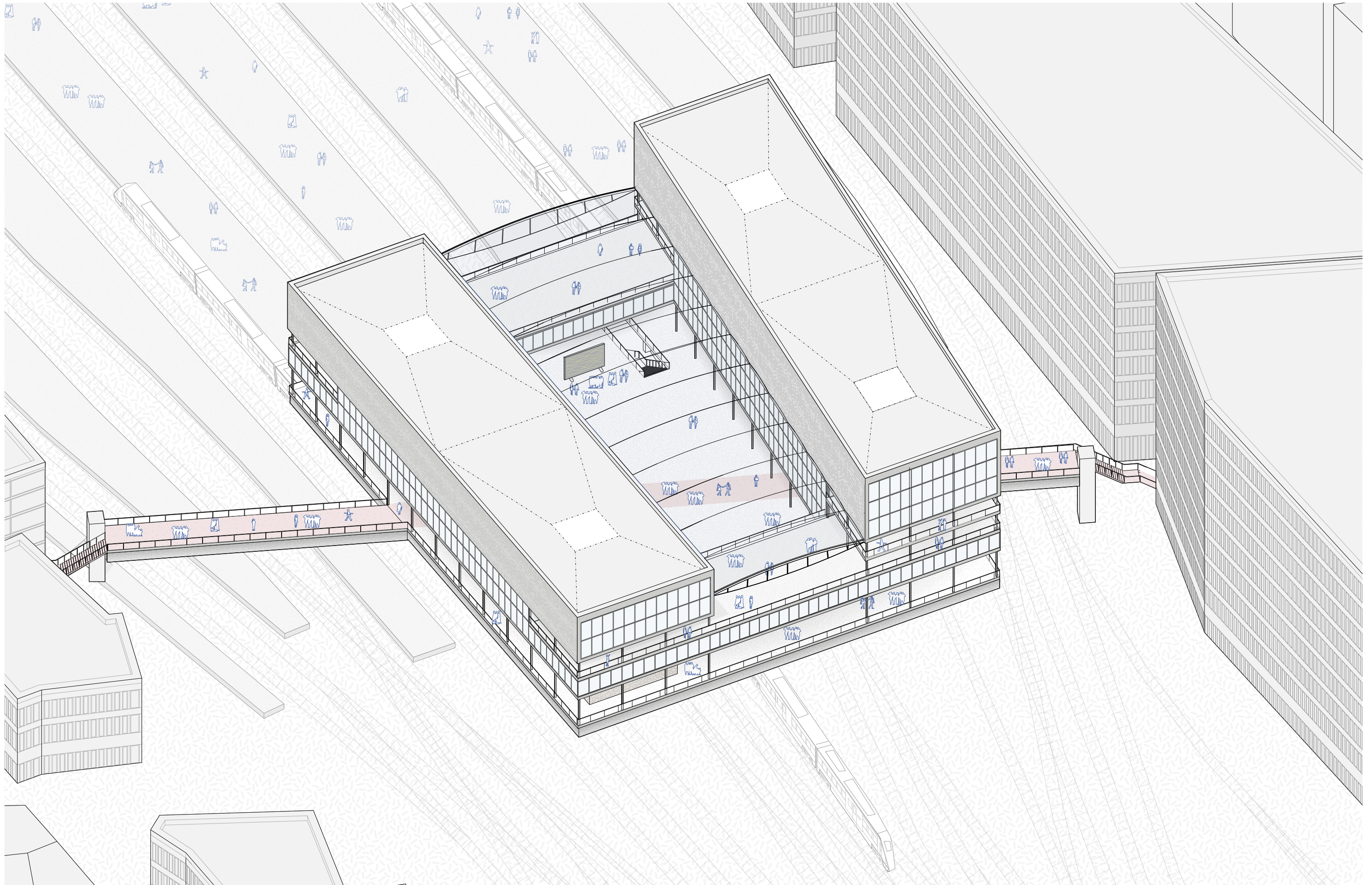
Palais Tiradentes - Oscar Niemeyer (2010)



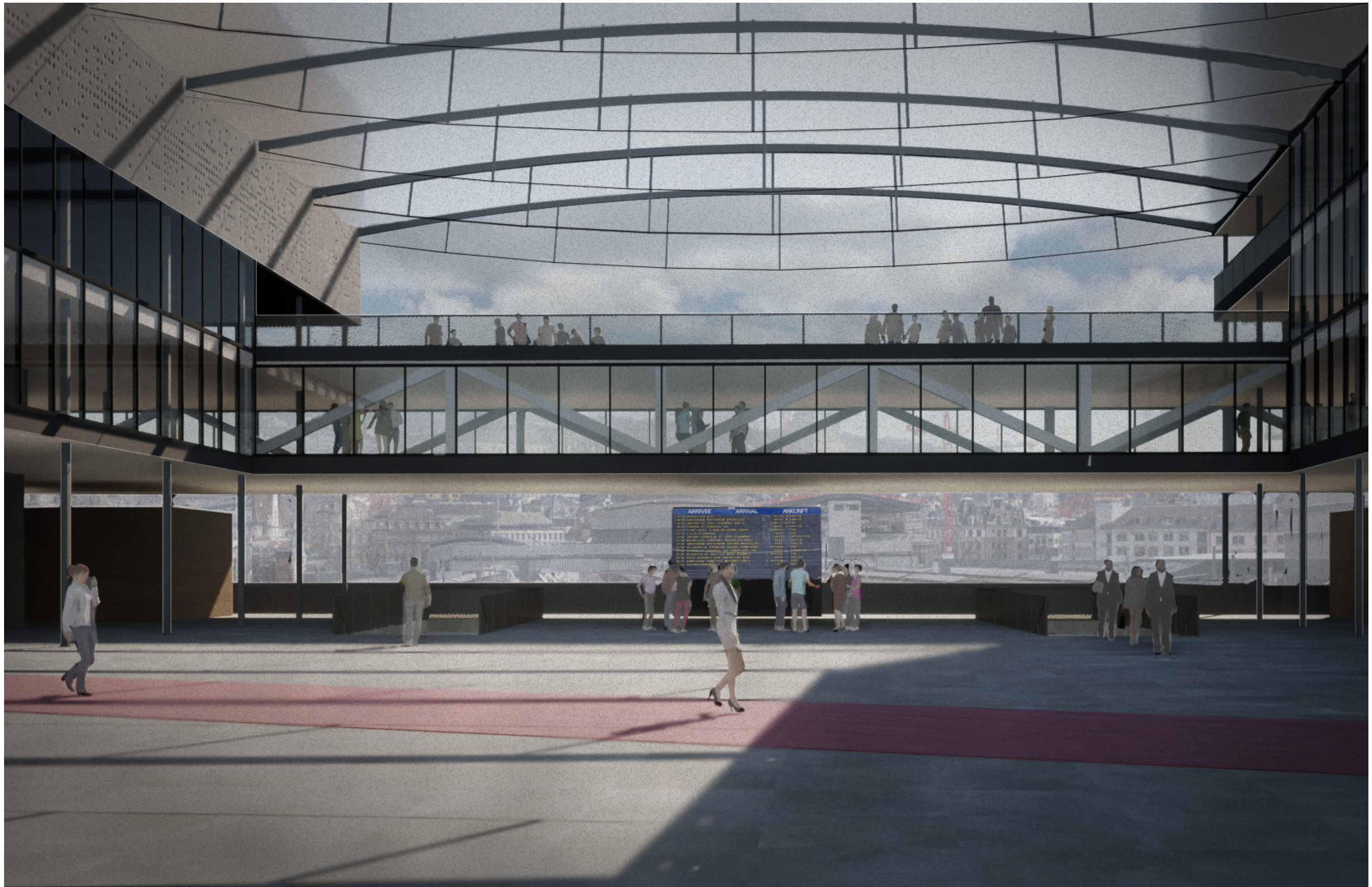
Utiliser la suspension pour passer de l'urbanisme de dalle à l'urbanisme de franchissement

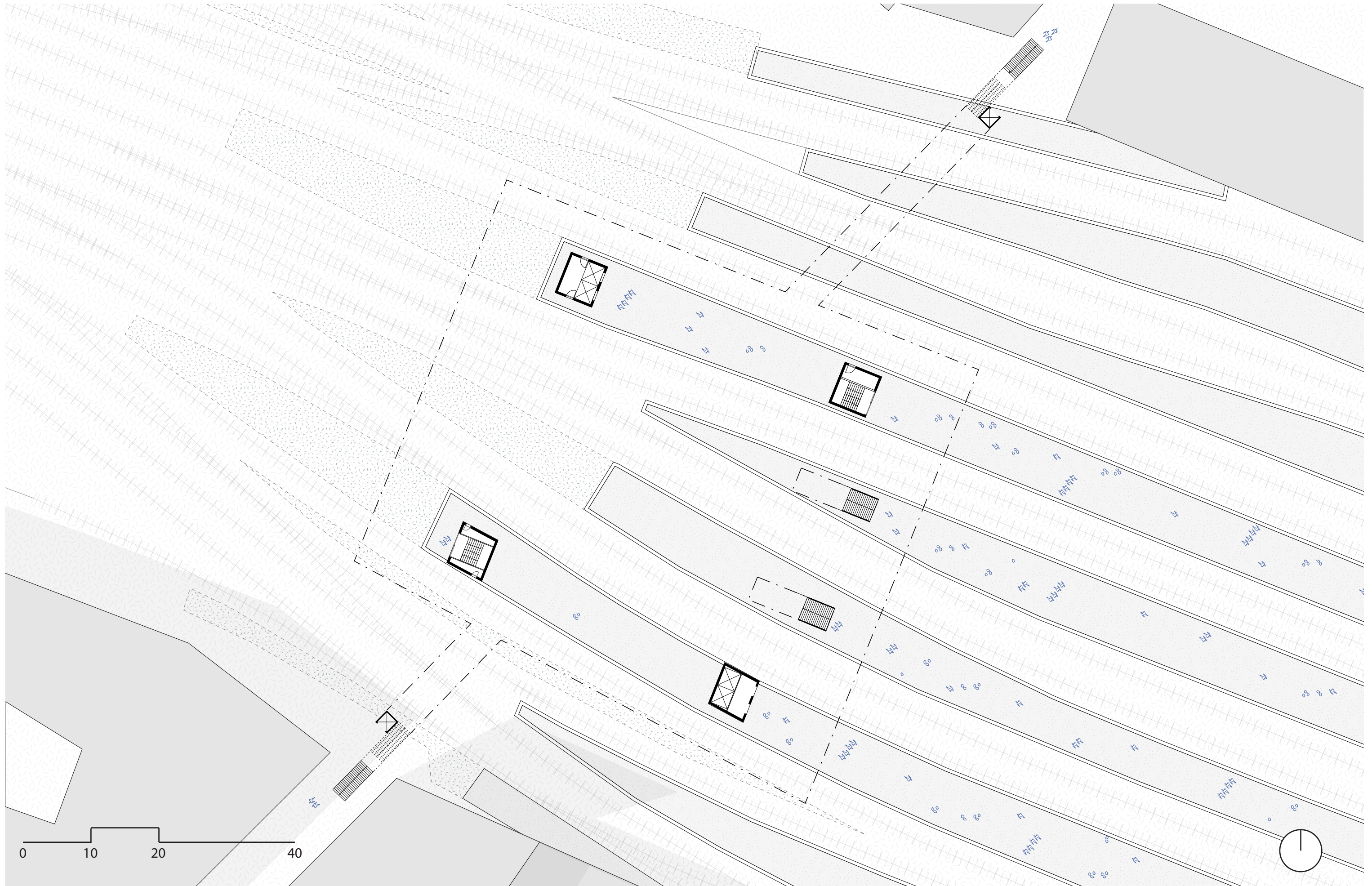


Gabarit adapté à l'existant pour limiter les ombres portées

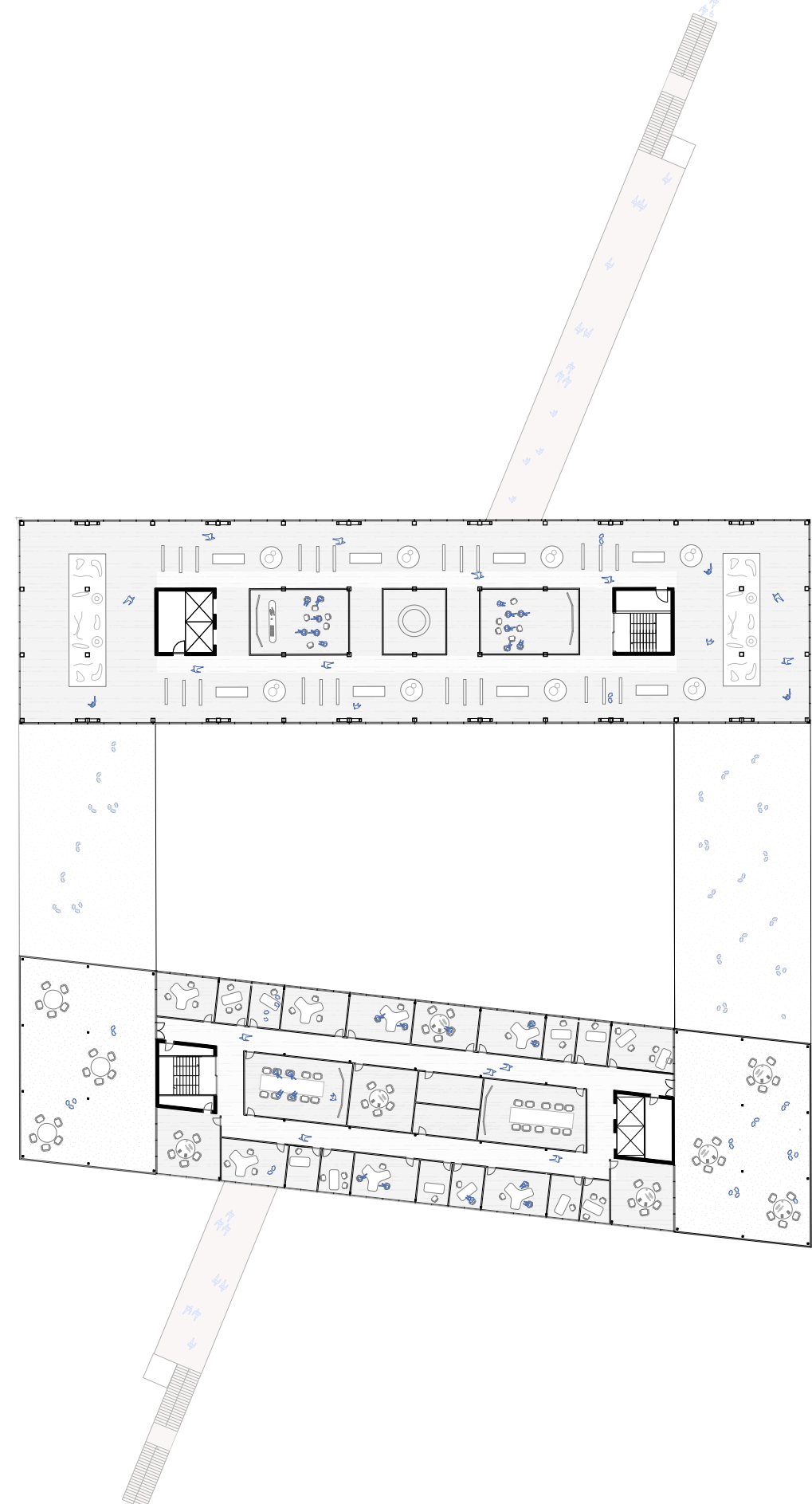
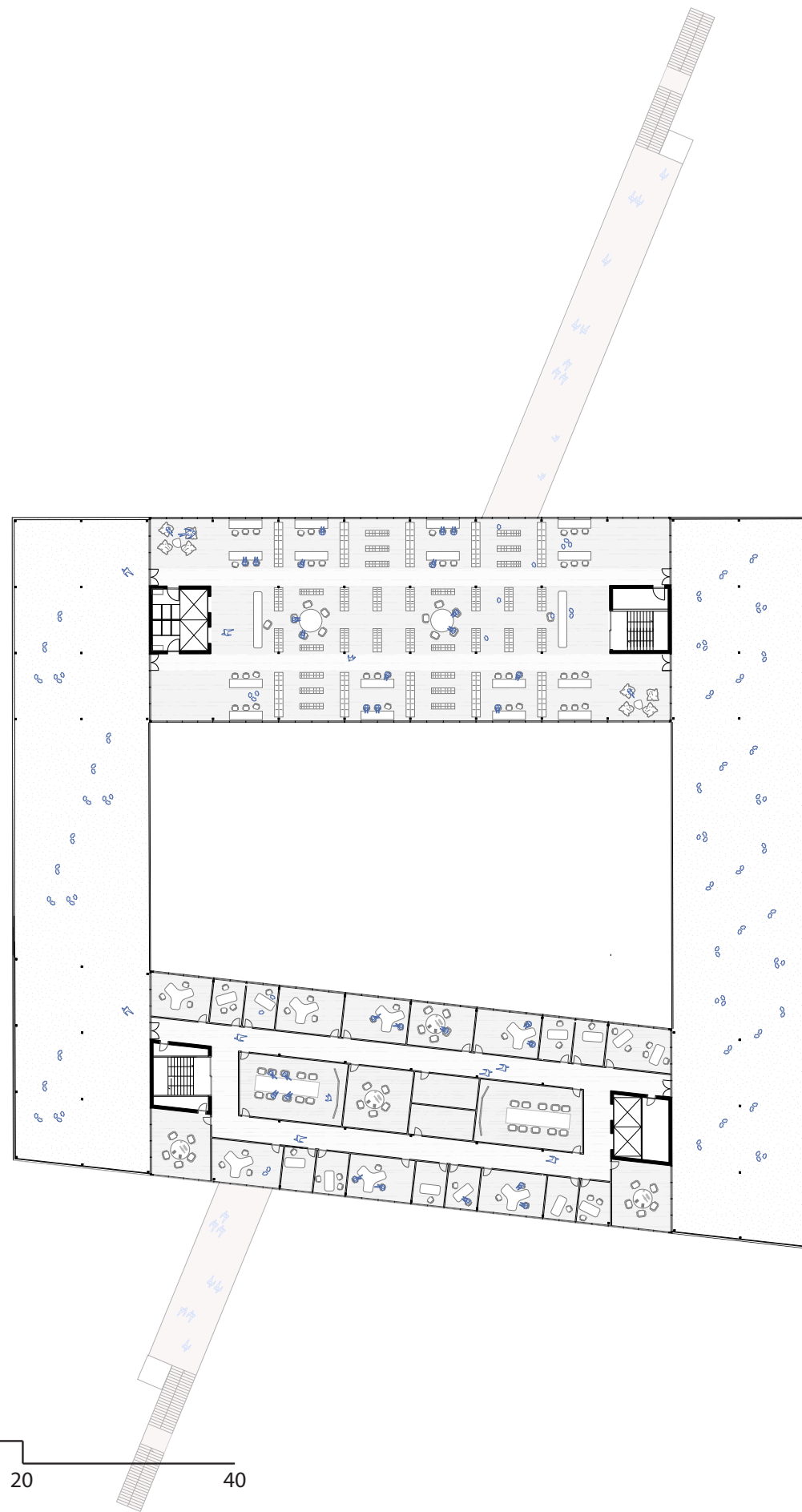


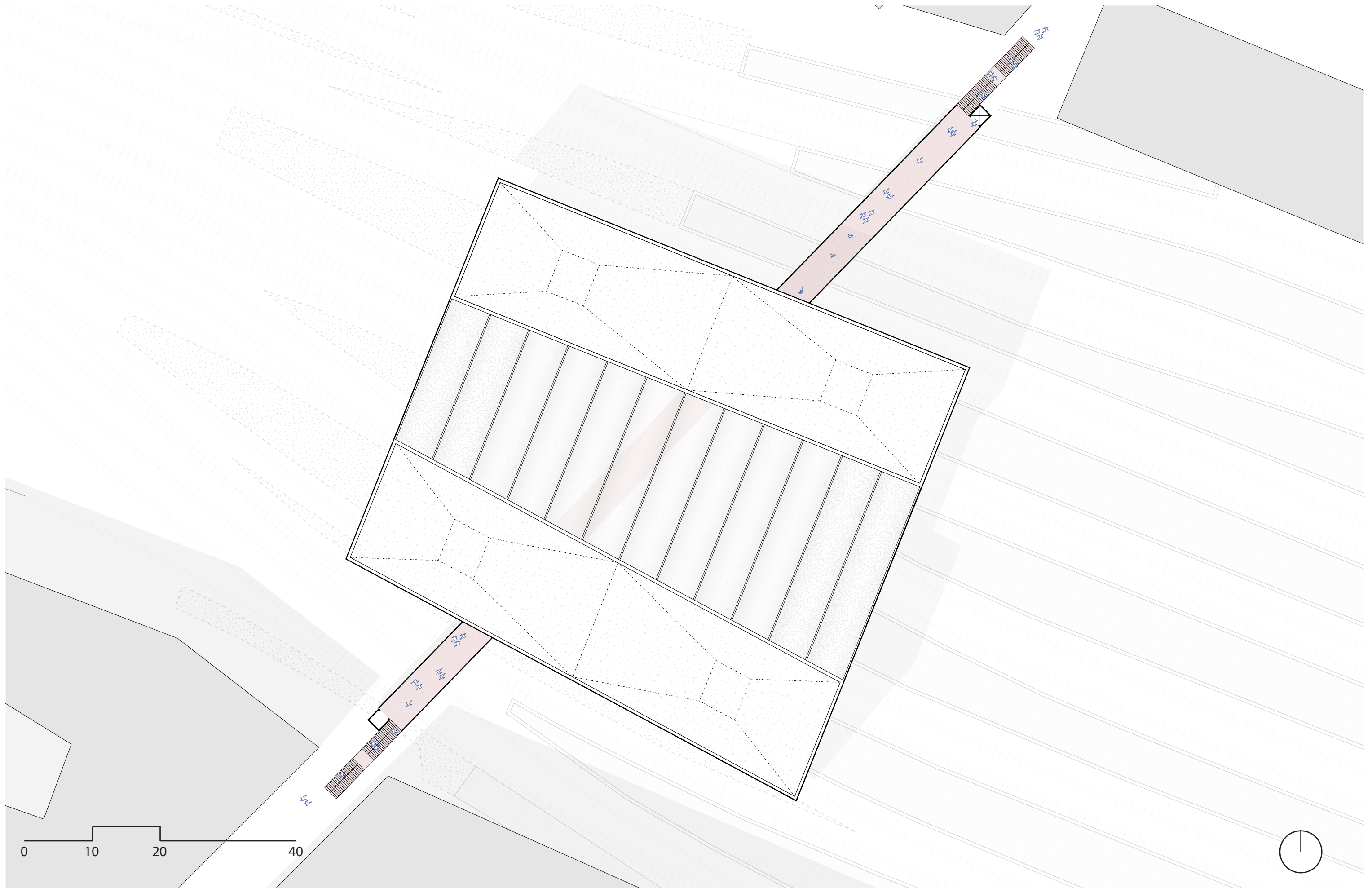


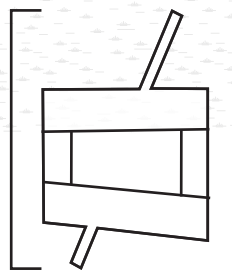
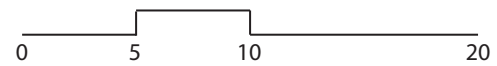
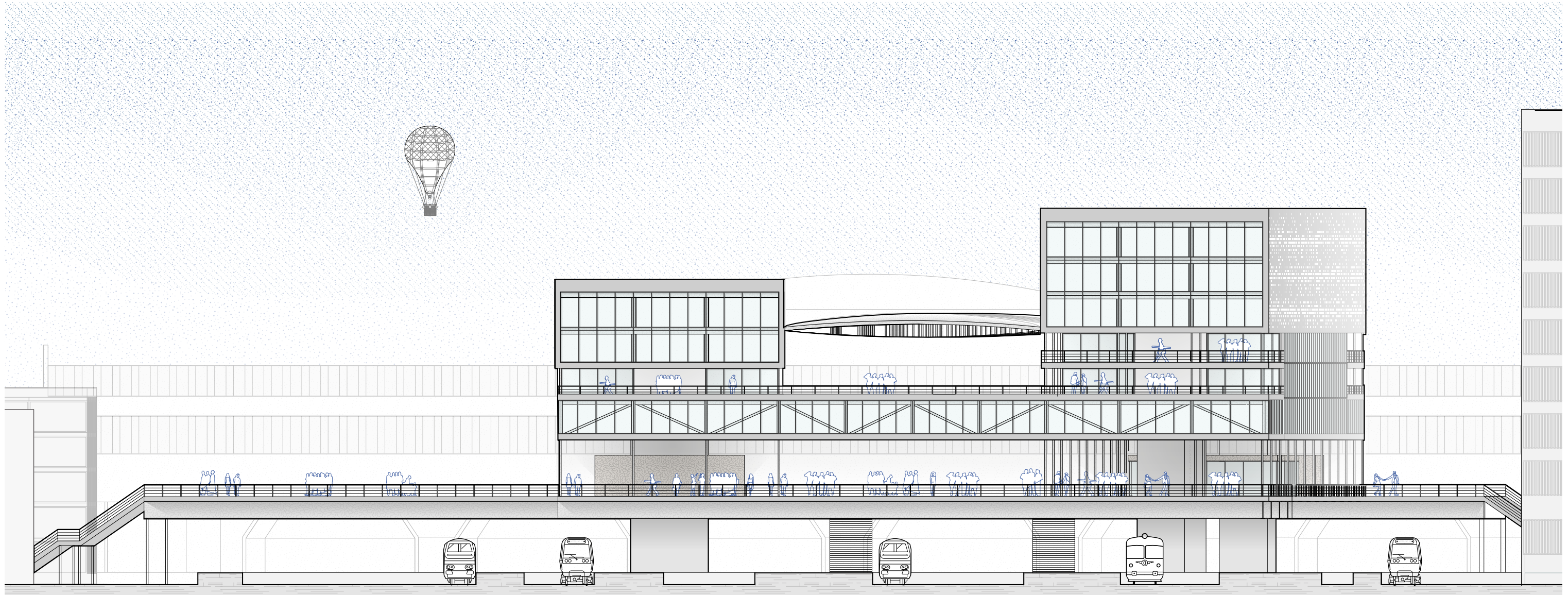


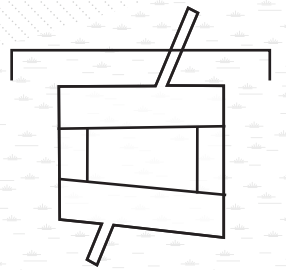
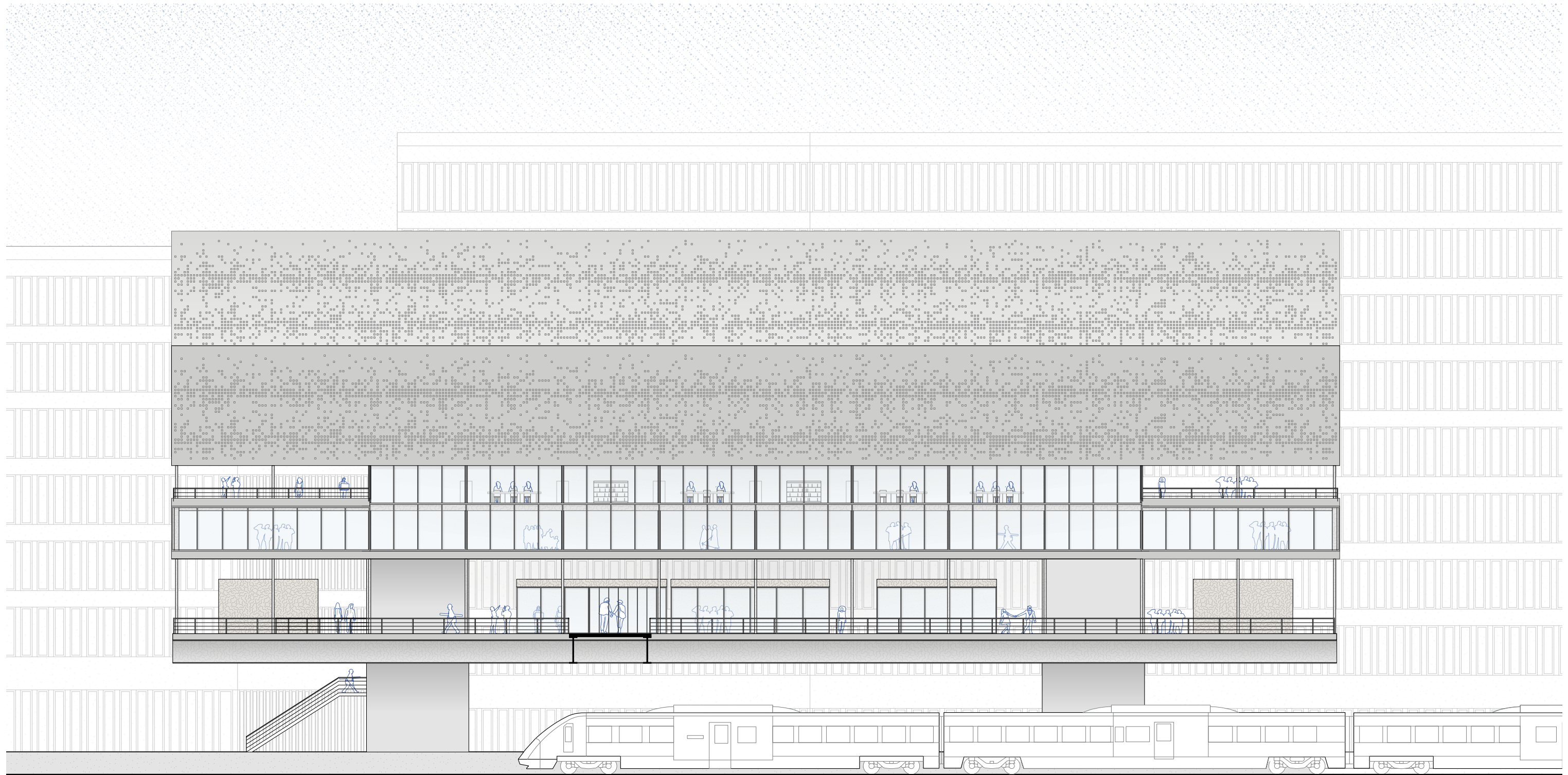




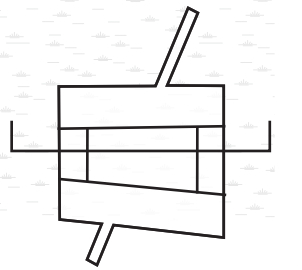
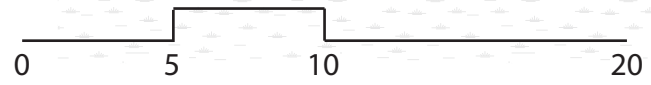
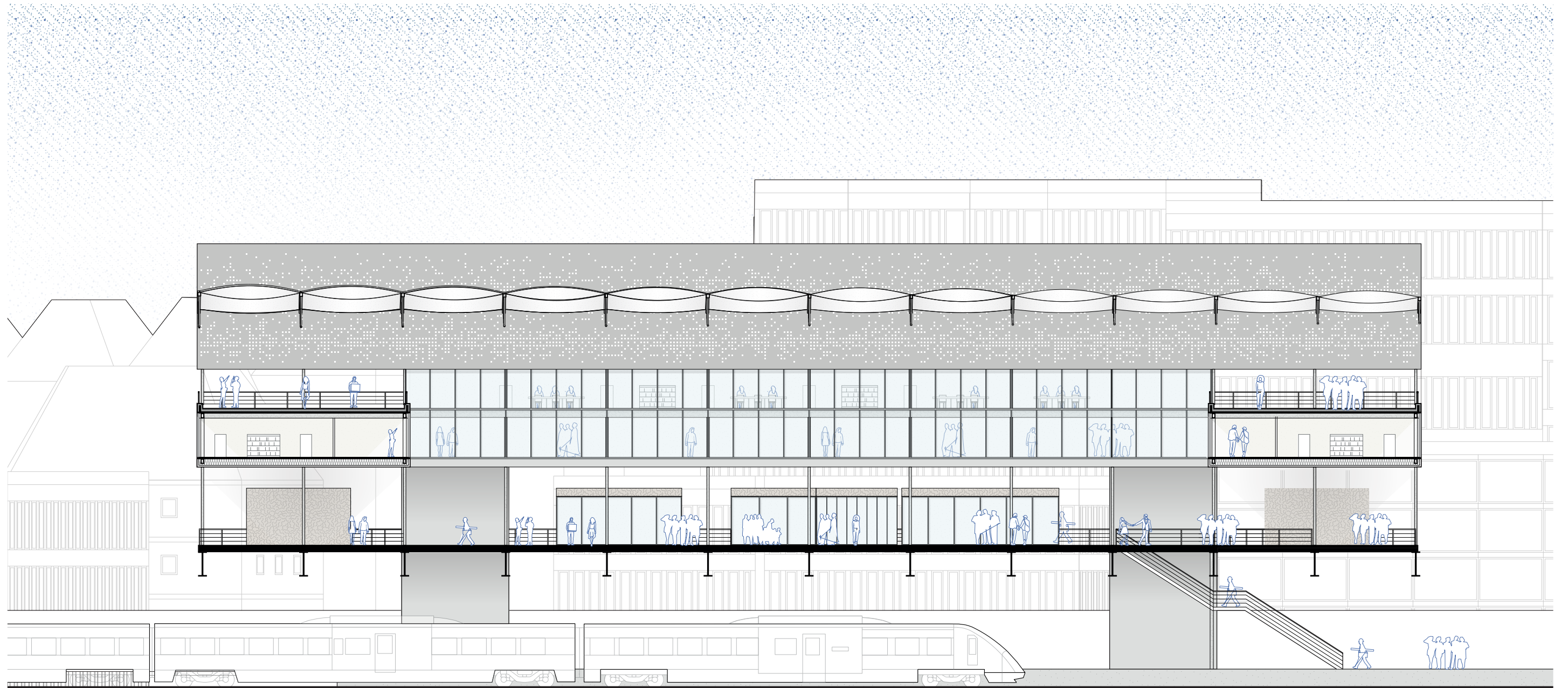




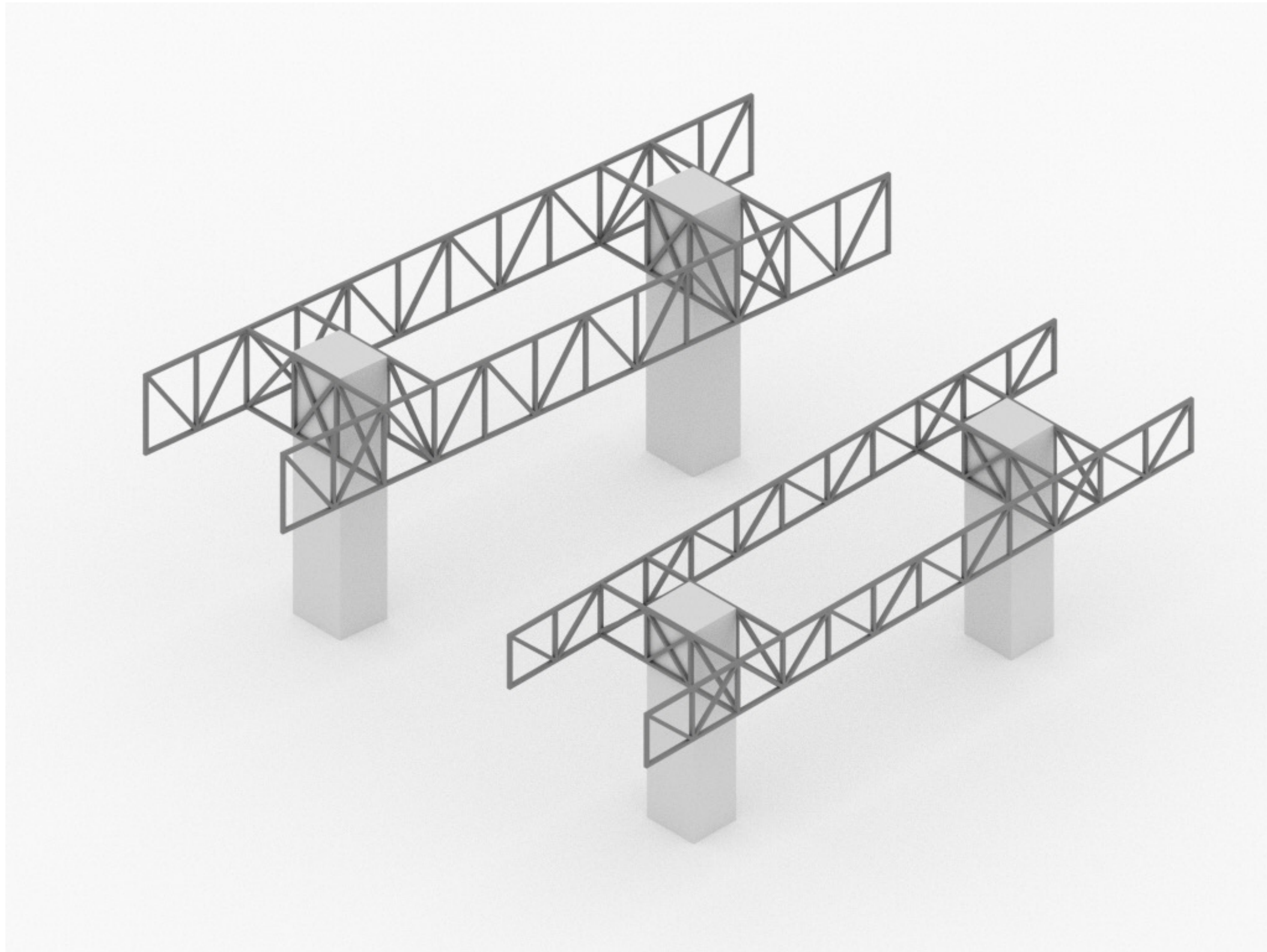


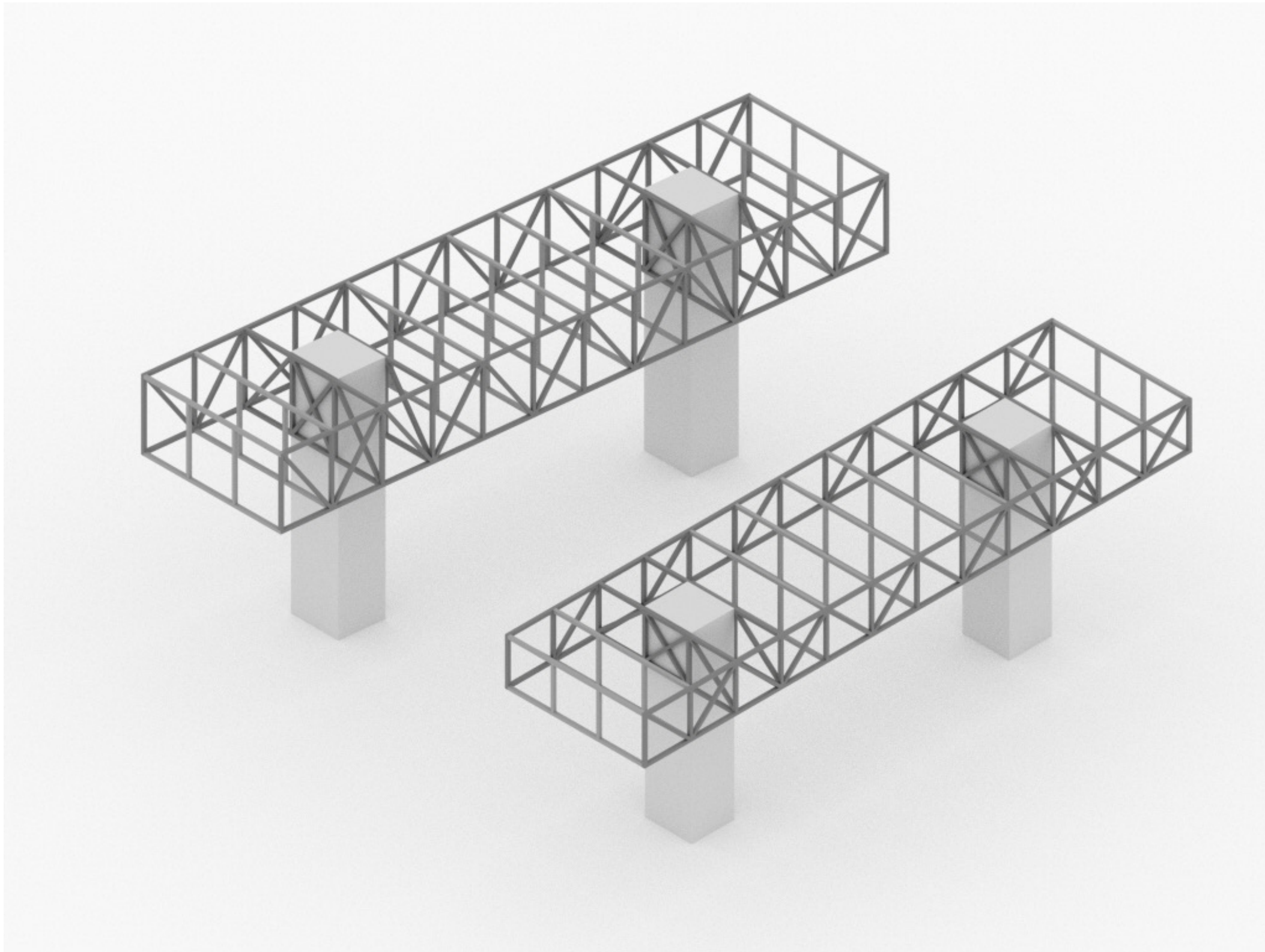


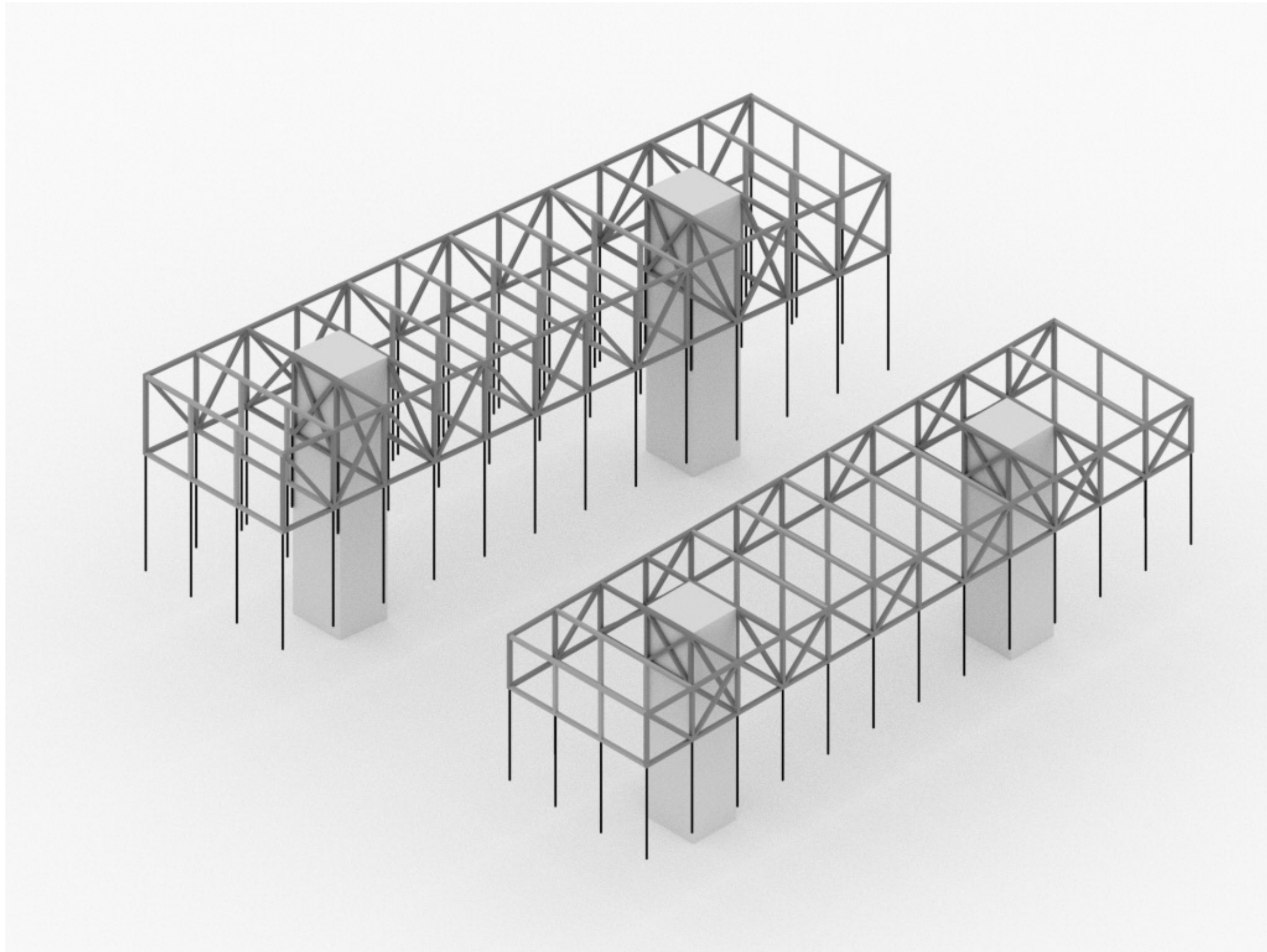


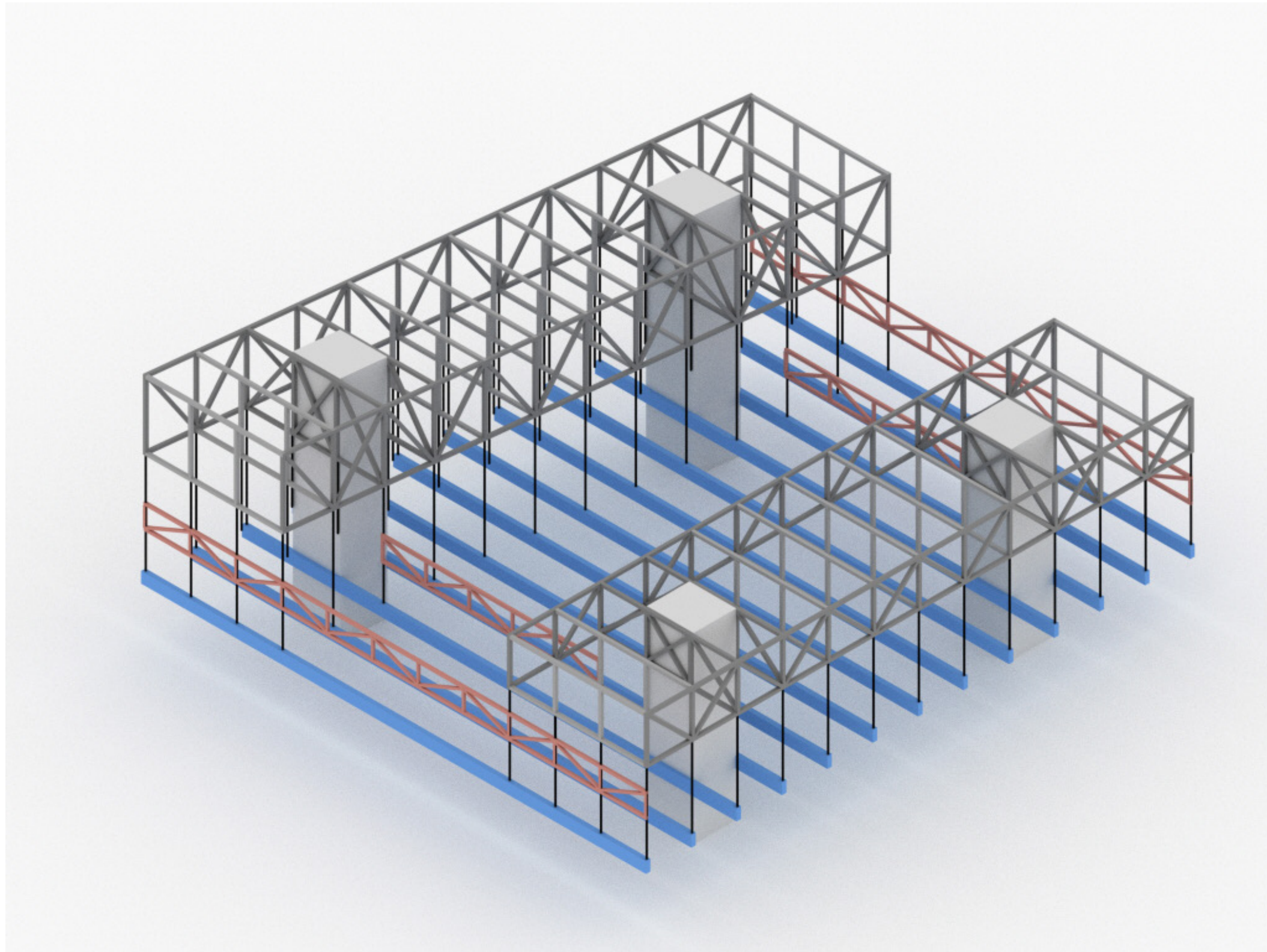


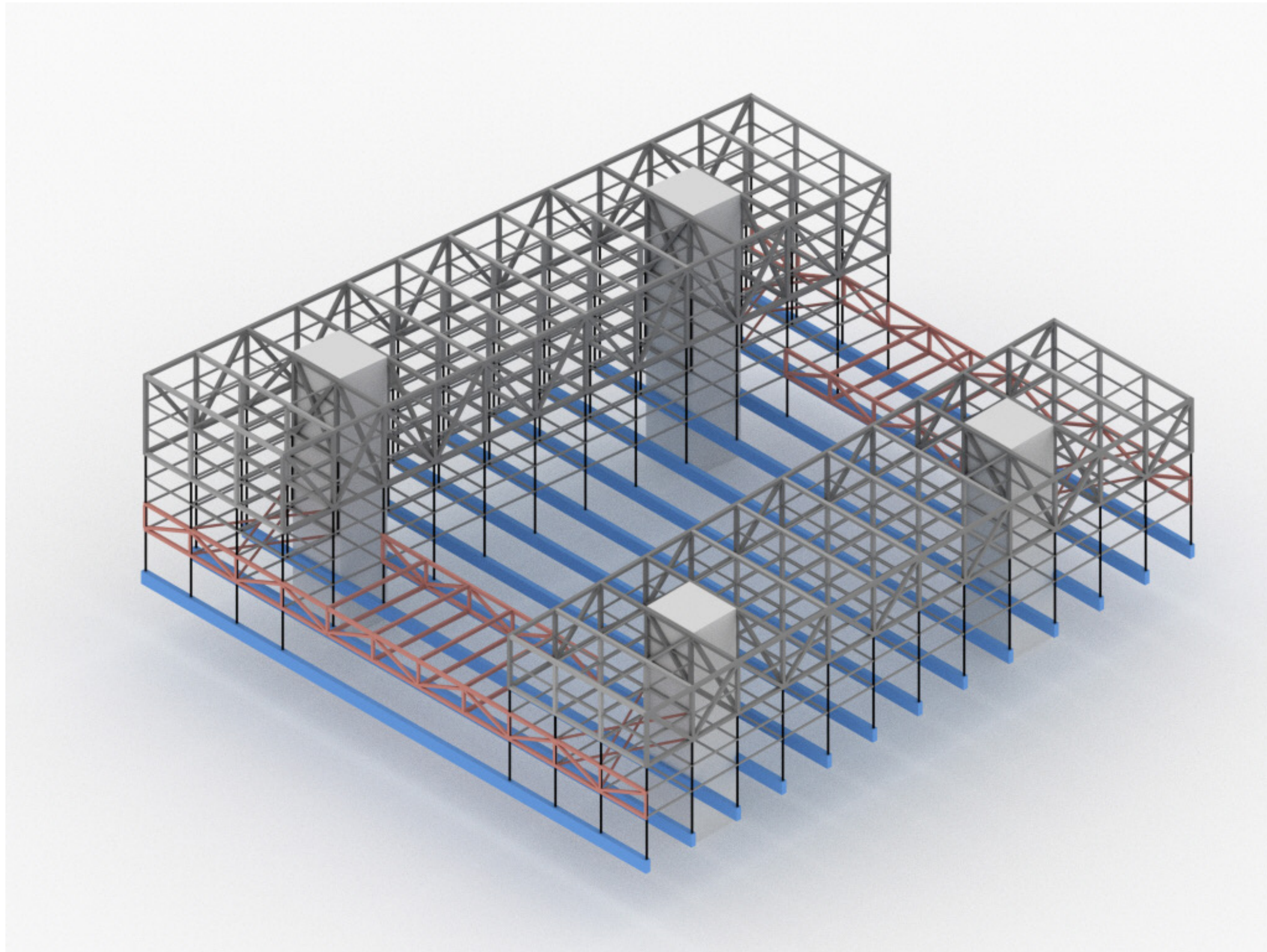


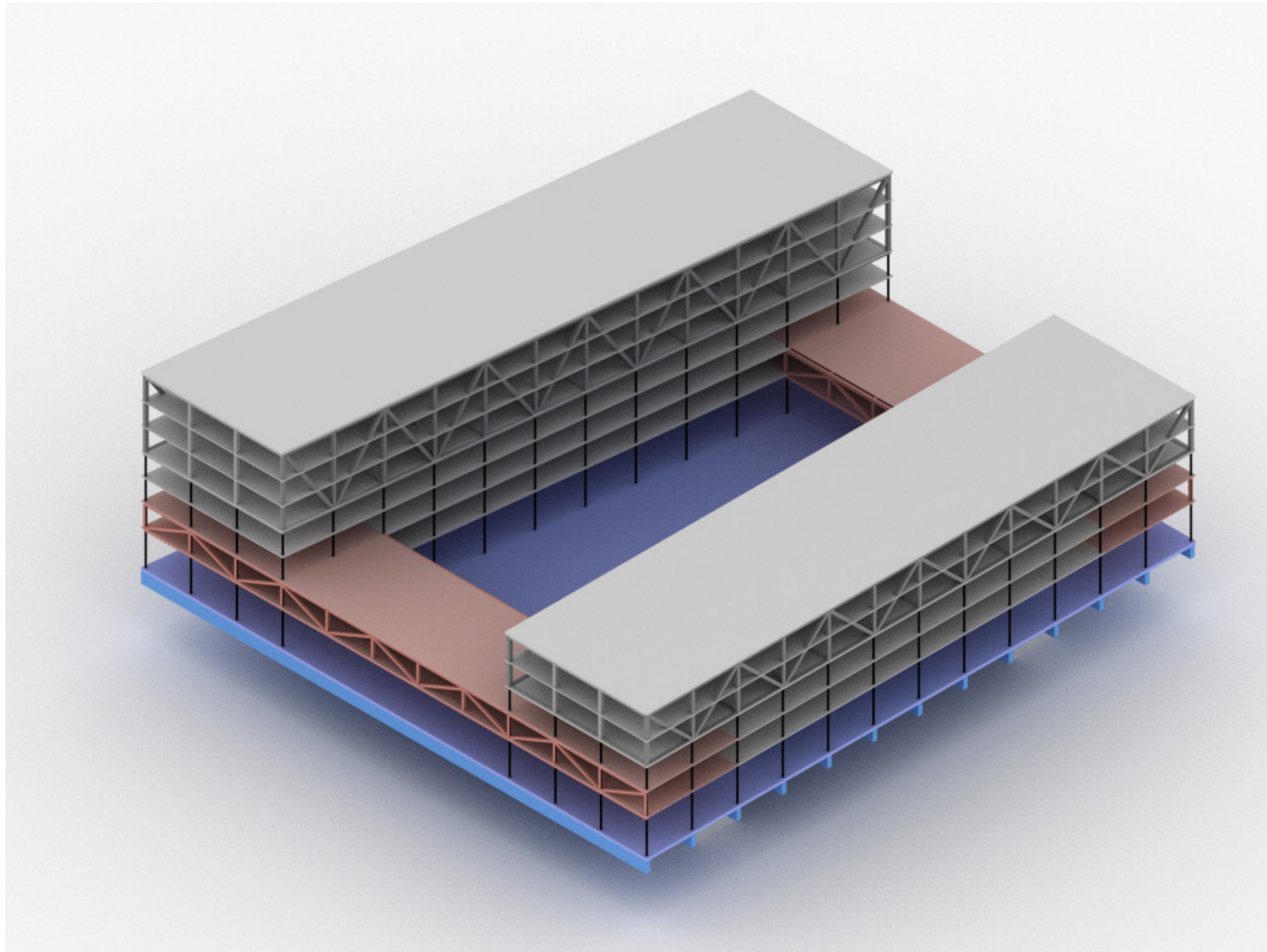


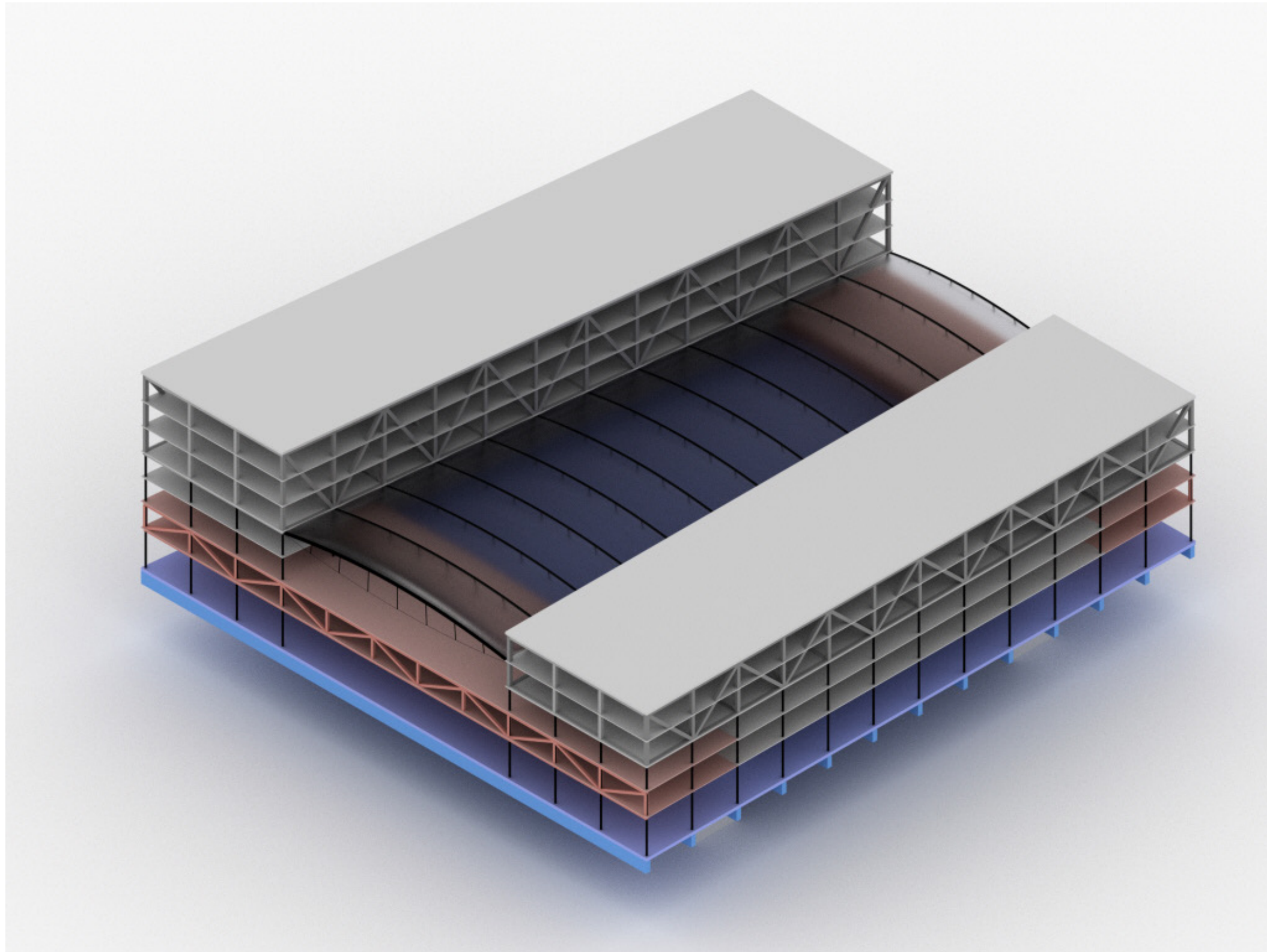


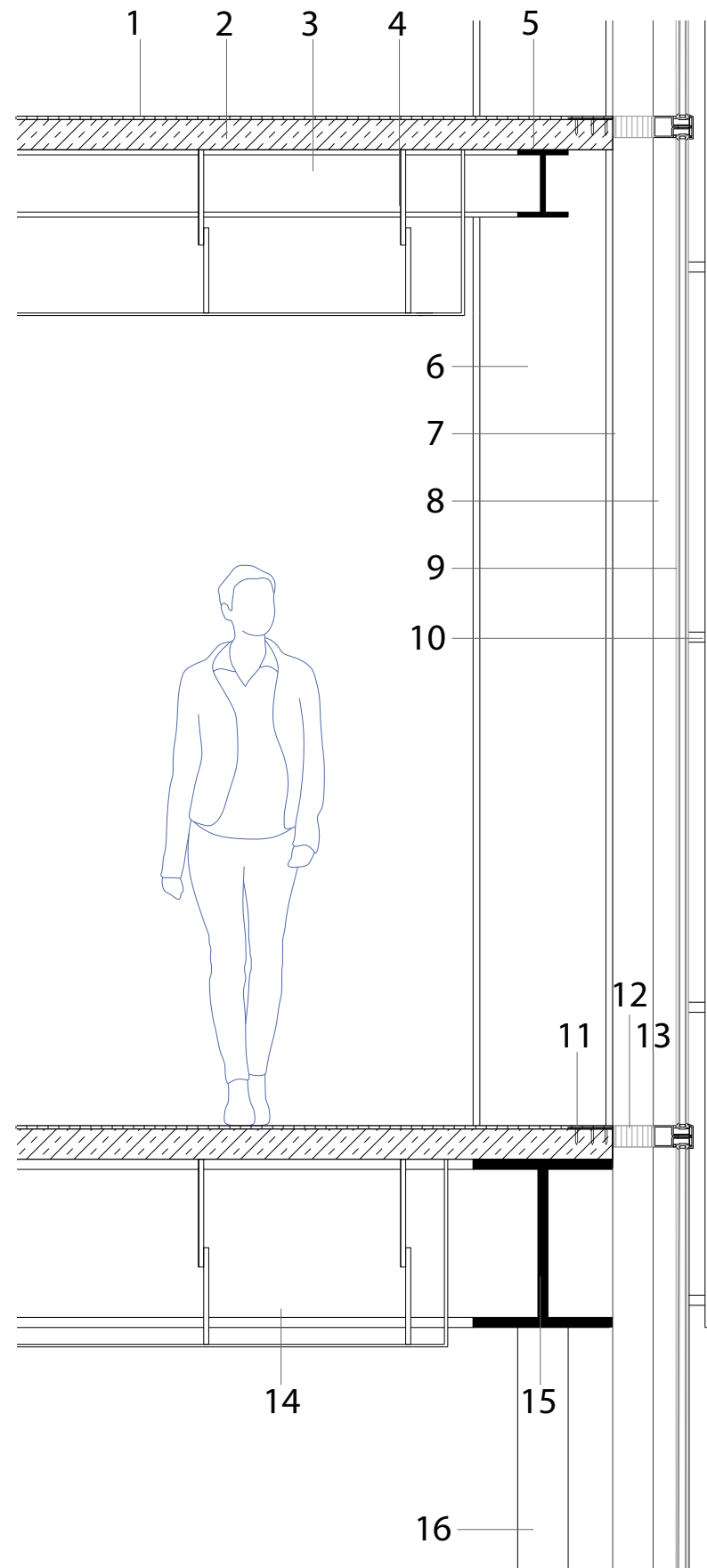












1. finition de plancher 10mm
2. dalle béton armé 90mm
3. poutre secondaire IPE 200
4. suspenste de faux-plafond
5. poutre tertiaire IPE 200
6. montant de la poutre treillis HEA 400
7. raidisseur aluminium 120 mm x 50 mm
8. menuiserie verticale aluminium
9. double vitrage auto-nettoyant 8-4-8
10. épine de fixation et tôle acier brossé perforé 1mm
11. fixation des raidisseurs verticaux
12. complexe de finition
13. menuiserie horizontale 60mm x 60mm
14. membrure basse de la box-beam IPE 400
15. membrure basse poutre treillis HEA 400
16. tirant SHS 150 x 150 x 8

Principes de projet :

- Occupation d'un emplacement privilégié au cœur des voies
- Restauration de la continuité Nord-Sud de la ville
- Une interaction avec les voies qui va au-delà d'un simple rapport de fondation
- Percevoir la grande infrastructure sous un nouvel angle
- Un espace public comme vecteur de rencontres, d'échanges et d'activités
- Utilisation de la stratification verticale comme procédé de conception et de composition